



2025 ANNUAL REPORT





A MESSAGE FROM OUR EXECUTIVE DIRECTOR

Sometimes the most meaningful impact begins with a simple yes.

A yes to give. A yes to serve. A yes to step forward without fully seeing how God will move.

This year at Clement Arts, we have been reminded that willingness matters. When people say yes—often quietly and behind the scenes—God works in ways far beyond what we can measure or predict.

Because of your yes, children found safe, creative spaces to grow. Families felt supported. Instructors and advocates were equipped. Hope was extended where it was needed most. While you may not see every life your generosity touches, the fruit of your faithfulness is real.

At the heart of this work is the truth we speak over every child and family we serve:

Because God made me, I am valuable.
I am beautiful.

Because He made me a maker, I can bring value.
I can add beauty.

Throughout the year, you helped us live out our namesake—Clement, meaning inclined to mercy. Every class, program, and event you supported created space for healing, belonging, and growth.

Saying yes when the outcome is uncertain is not small work—it is holy work. And because of your willingness, lives are being shaped, and beauty is being created.

Thank you for your yes.

CHRISTAL GAVIN

EXECUTIVE DIRECTOR
CHRISTAL GAVIN

Pg. 01
A Message From Our Executive Director

Pg. 02
Studio Highlights

Pg. 04
Family Advocacy Ministries

Pg. 06
Community Impact

Pg. 07
Impact Stories

Pg. 08
Event Highlights & Revenue Growth

Pg. 10
Staff & How to Help

STUDIO HIGHLIGHTS

Studio Classes Continue to Flourish in 2025

The studio continued to grow and expand this year, adding new classes and instructors to meet student demand. Quilting students stayed engaged while beginner machine sewing returned to the schedule. With the purchase of a kiln, we are now exploring additional ceramics classes and instructors.

This year also brought more fine arts integration into our ballet performance: a Set Design and Costuming class allowed students to contribute directly to the production, adding 10 more artists to the annual Showcase and creating meaningful hands-on learning opportunities.

15

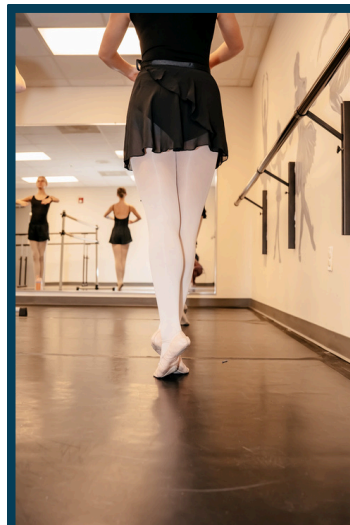
Arts disciplines were offered, including courses such as ballet, martial arts, culinary arts, acrylics, watercolor, quilting, ceramics, and more!

76

Individual classes offered: 31 in the spring, 8 summer intensives, and 37 in the fall.

121

Creatives participated in the second annual Art Showcase—38 artists and 83 dancers. Ticket sales generated \$2,459.79, which will help fund tuition assistance and other student support needs.



The Clement Creed
Because God made me...
I am valuable
I am beautiful
Because He made me a maker...
I can bring value
I can add beauty

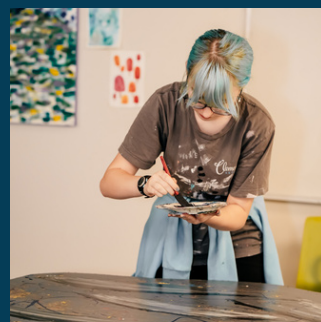
76

**Fine Arts
classes
provided**



569

Enrollments



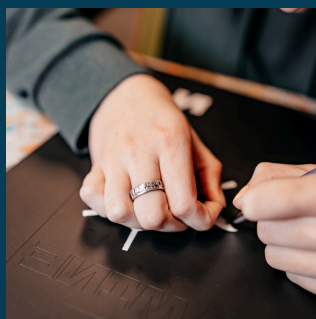
22

**Children
attended
tuition free**



ALL

**Students
recited the
Clement Creed
in every class!**





FAMILY ADVOCACY MINISTRIES

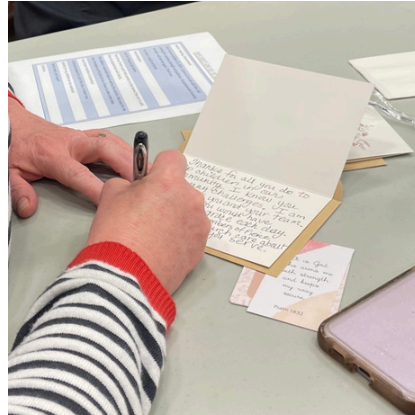
At the close of 2025, Clement Care mobilized **30 churches and over 229 volunteers**, united in supporting vulnerable children and families before, during, and after foster care through prevention, intervention, and meaningful connection.

Each month, you helped support **121 children** and their caregivers through a community of care tailored to each family's needs—providing mentorship, meals, childcare, and tangible support. This care helps prevent foster care placements, strengthen foster families, and support family reunification.



Families Count graduates and facilitators from Foster Love at Wynnbrook Church

Provided a safe, engaging Kids Day Out for 66 children, giving foster and preventative-care families a meaningful day of respite while kids enjoyed a day of fun.



Encouraged 100+ child welfare workers throughout the year with appreciation lunches, handwritten notes, goody bags, meeting coffees, and intentional prayer.



Pictured are team members from some of our Clement Care Network churches during select events, including CityScape, Greater Beallwood Baptist, Pierce Chapel, Calvary Baptist, Saint Mark, Gentian, Wynnbrook, and Christ Community Church.

COMMUNITY IMPACT

CarePortal connects churches with vetted needs from Muscogee and Harris County DFCS and area crisis pregnancy centers, supporting families in crisis, foster families, and reunification. In 2025, 25 trained churches and 388 responders met 97 requests, **serving 367 children** and generating \$132,652 in economic impact.



Seven Clement Care Network churches provided 84 home-cooked meals, **serving 510 people**. These meals supported foster families, families without a regular care community, and families in crisis—offering practical care when it's needed most.

Families Count is a biblically based parenting course offered through local churches to support families in crisis. In 2025, 3 churches hosted Families Count, offering 4 classes and **celebrating 29 graduates**—equipping caregivers to build stronger, more stable homes.



IMPACT STORIES

FOSTER FAMILY

Our care team through your church has been so intentional and consistent in reaching out to us with prayer, support, and encouragement. Every prayer for our kids, their families, and our family reminds us that while foster care is out of our control, nothing is outside of God's control. We are so grateful to be cared for by a praying church. *(Note: the foster family is served by a church they don't even attend!)*

MOTHER WITH CAREPORTAL REQUEST

When a mother received a much-needed refrigerator, she sent a photo right away—beaming with gratitude. She shared that she had recently been reported to DFCS through a false complaint and was overwhelmed by fear and frustration, never expecting anything good to come from that experience.

This simple act of care changed everything. Instead of feeling punished, she felt supported. The refrigerator met a practical need—but more importantly, it shifted her perspective, reminding her that help can come with compassion and dignity.

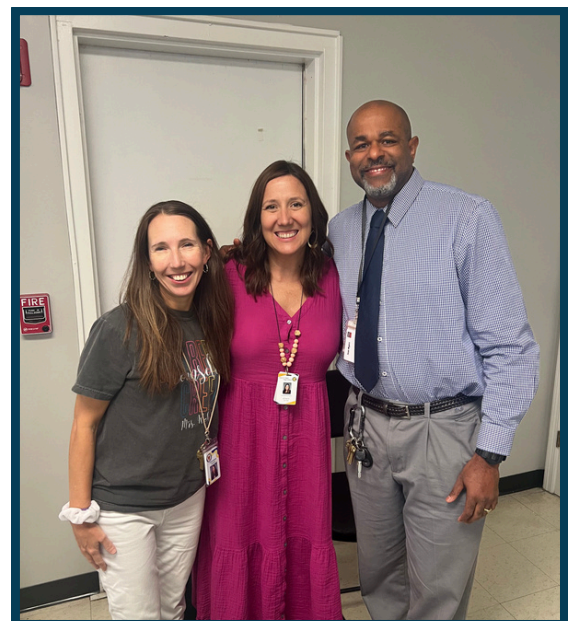
LOCAL PASTOR

As the police are called for crime, the Church must answer the call to care for children and families in crisis. Our government can help with much, but our churches must lead the charge in being inclined to show mercy. Clement Arts allows this deep truth to be painted upon the canvas of our community, both convincing the Church to join the effort and providing a means of sustainability to persevere in walking in holiness worthy of the Gospel of Jesus Christ. – Brandon Reed

STUDIO FAMILY

When a grandmother unexpectedly became the primary caregiver for her two grandchildren through a kinship foster placement, the sudden responsibilities were overwhelming. She worried about how to provide stability and opportunities for her grandchildren—but then her granddaughter was able to attend classes at Clement Arts with tuition assistance.

The experience has been life-changing. Not only has it helped her granddaughter grow in confidence, but it has also given the family a sense of connection and safety. The grandmother says they are deeply grateful to have a place where her grandchildren can learn, create, and thrive, even in the midst of a challenging season.



*Three school counselors
attend the Harris County
CarePortal launch*



EVENT HIGHLIGHTS

We create opportunities for you to financially support primary, foster, and adoptive families through ticketed artistic events such as concerts, photo days, ballet performances, and art shows.

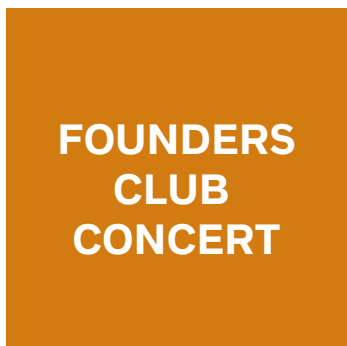


ARTISTS' MARKET



BALLET MAGNIFICAT!

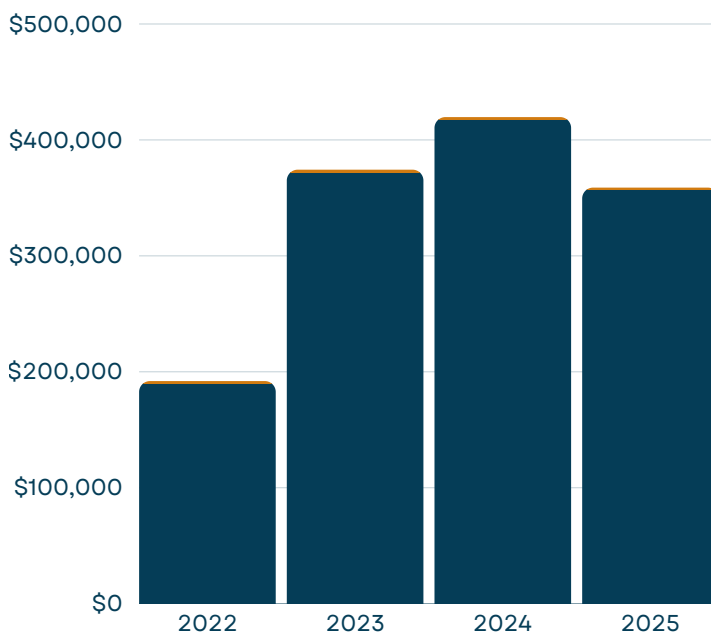




REVENUE GROWTH

We praise God for His faithfulness. While some anticipated funding did not come through this year, Clement Arts ended 2025 with \$356,846 in revenue and continued serving vulnerable children and families across our community.

As we look ahead, we invite church and funding partners to continue walking with us. We trust God with this mission—one that is greater than us—and are grateful for every partner who helps make a sustainable, long-term impact possible.



STAFF

In 2025, we continued to see God's provision through the growth and strengthening of our team. In January, we welcomed Jen High as our Clement Care Coordinator, overseeing church engagement and growth, as well as key programs including CarePortal, Families Count, and Care Communities. Ellie Hughes continued to serve as Studio Director, leading and growing Clement Arts classes, while Amy Jaeger transitioned into a part-time Events and Marketing role, using her gifts to support the organization as a whole. Lindsey Aldridge served as Operations Director, providing steady operational support, and Christal Gavin continued to serve as Executive Director.

We are grateful for this dedicated team and the opportunity to serve vulnerable children and families together.

HOW TO HELP

Clement Arts exists because many individuals and churches give their time, talents, and resources to make a difference in the lives of vulnerable children and families.

Here are three ways you can help:

1. Pray

Every month, we pray for a topic related to child wellbeing. You can find our prayer prompts on social media, in our newsletter, and in our printed prayer guide or calendar (reach out, and we will gladly send you a copy).

2. Advocate

Join or start a Family Advocacy Ministry at your church to support adoptive and foster families or birth families in crisis. Email Jen@clement-arts.org to get started.

3. Give

Become a monthly donor or give an individual gift online at clement-arts.org or by mail:

Clement Arts
P.O. Box 1142, Fortson, GA 31808



Instructors & Advocates
at the Clement Annual Retreat